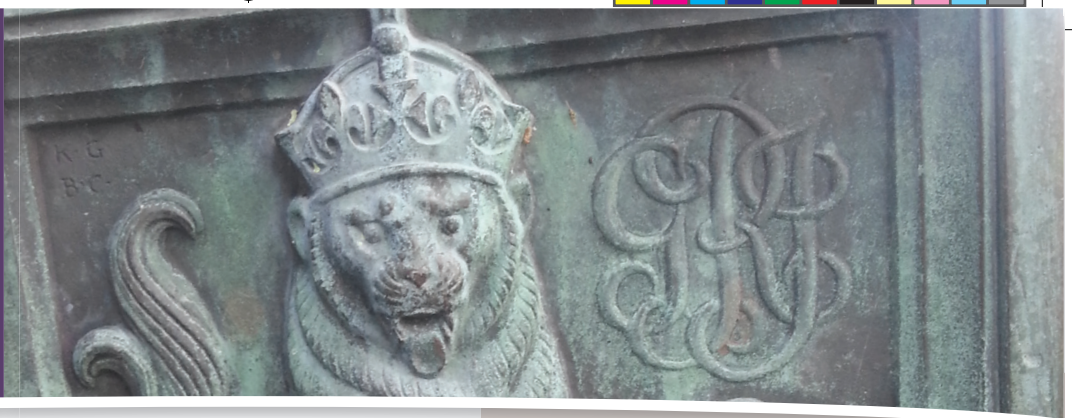


King George's Playing Field Newsletter

Issue 1 - November 2014



Welcome

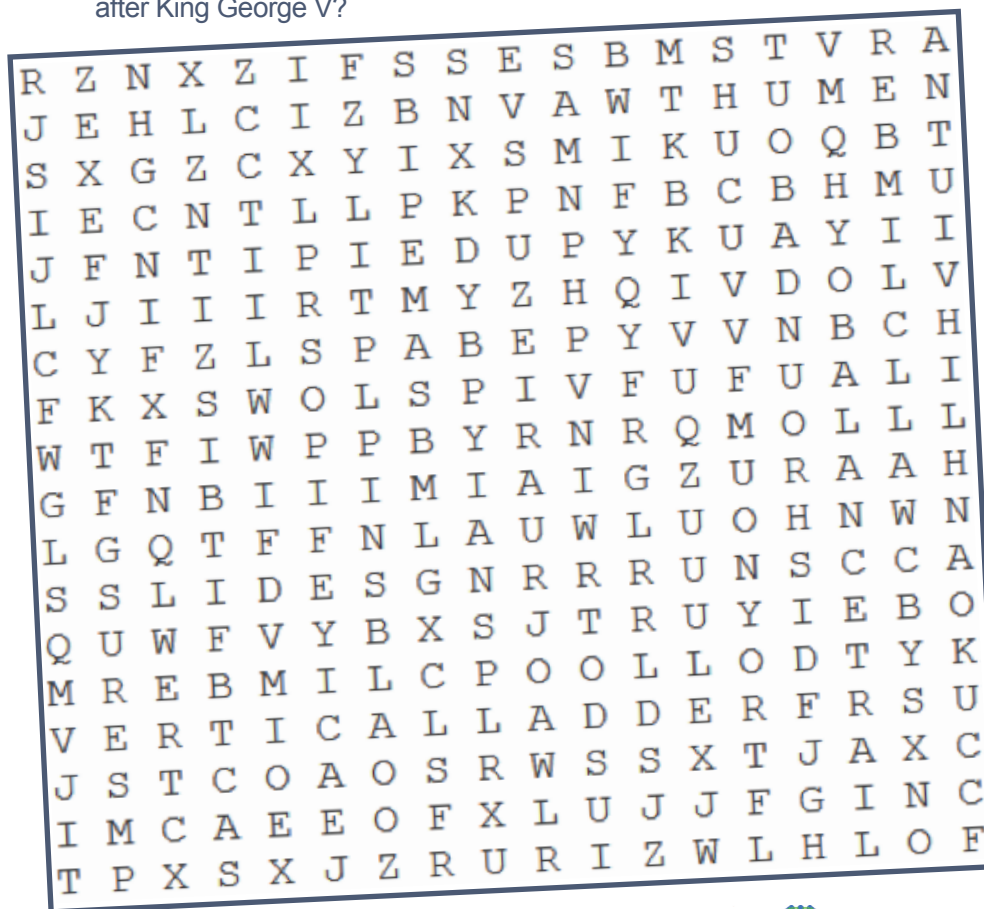
Welcome to the first King George's Playing Field newsletter. This and future newsletters will keep you updated with progress as the Joint Parish Council (JPC) Working Group moves forward with the development of our playing fields. In this edition:

- The children's play area designs have been finalised – be the first to see the layout at the drop in sessions on 6 and 7 December
- Fundraising is progressing well but we need villagers to raise at least £12,500
- Hold the date for a breakfast fit for a king plus a sponsored walk around Barford
- How could everyone living in Barford, Sherbourne and Wasperton benefit from the new facilities being implemented?
- And do you know why our playing fields are named after King George V?

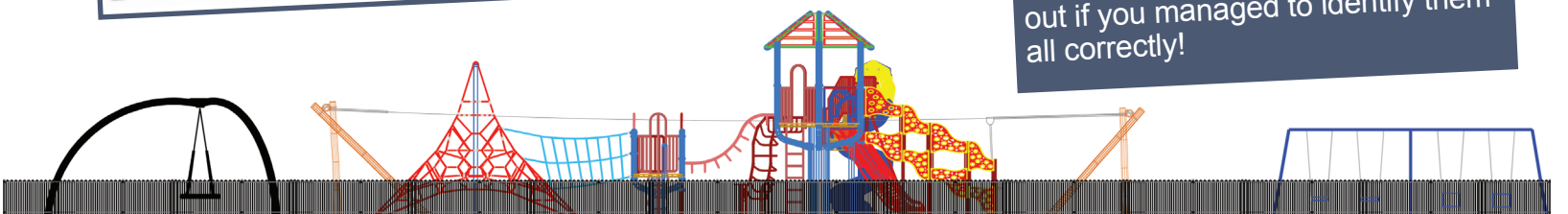
Be the first to see the final children's play area designs!

It's official – the designs for the children's play area have been finalised. The JPC Working Group has listened to the many comments provided by villagers from across Barford, Sherbourne and Wasperton. Members of the Working Group have visited over 30 play scheme sites across the country to identify play equipment which children really use. They have spoken to over 20 different manufacturers and have now settled on one. The Working Group has presented its recommendations to the JPC which has now requested that the equipment be ordered and upgraded as soon as the first funding milestone is reached.

Full designs for the children's play area will be on show at drop in sessions at Barford Memorial Hall on Saturday 6 December (2.15pm to 5pm) and Sunday 7 December (9am to 12.30pm). Come along to be the first to see what will be created when we reach our first fundraising milestone.



The Working Group may be keeping the final children's play area designs under wraps until the drop in sessions on 6 and 7 December, but the super sleuths amongst you may be able to discover just some of the equipment being introduced by solving the word search opposite. Can you find 13 types of equipment hidden amongst the letters? Come along to the drop in sessions to find out if you managed to identify them all correctly!



Fundraising



...your village needs you!

Fundraising for the transformation of King George's Playing Field has started well. The Working Group has already secured a total of £56,000 and applications have been submitted, whilst others are being prepared, for further funding. It is working hard to maintain momentum to keep the money secured continually increasing.

So does that mean that you (yes, you!) can sit back and do nothing? No! Your village needs you!

At least £12,500 of local funding needs to be raised by next summer to enable additional funding options to be progressed. This means that villagers from Barford, Sherbourne and Wasperton need to support this by setting up activities to raise funds. Ideas could include dinners, car washing, raffles, a bake-off, social events or even sports and leisure events. Think back to what you did or supported when funds were being raised for Barford Village Shop. Come along to the drop in sessions on Saturday 6 and Sunday 7 December to discuss with the Working Group how you can help raise these much needed funds.

On Saturday 7 March 2015, the Working Group will be arranging events designed to raise much needed local funds for, and get the whole community involved in the development of, your playing fields.

Saturday 7
March 2015
- hold the date!

Your day could start with a breakfast fit for a king – King George V of course! Enjoy either a full English or continental breakfast in Barford Memorial Hall. Tickets will sold for this event in early 2015 and more information will follow but save the date (and your appetite!).

We'll also be arranging a sponsored walk around Barford on Saturday 7 March 2015. This will be open to everyone from Barford, Sherbourne and Wasperton plus family and friends. The walk will start and finish at Barford Memorial Hall and will involve at least one circuit of the village (taking in, of course, King George's Playing Field). Watch this space for more information on the route and how to raise funds. Plans are also in place for a sponsored cycle ride for those who want to raise money on two wheels!

And the day will end with a Promises Auction in Barford Memorial Hall suitable for the whole family. More information to follow!

What could the new facilities mean for you?

Current plans for the entire transformation of King George's Playing Field go far beyond a new children's play area. See the latest plan at the December drop in sessions for what we are hoping to bring to Barford if we can secure sufficient fundraising.

How could you benefit from a new multi sports facility, tennis courts, a football pitch, an improved skate park, perimeter paths and fitness equipment? Would you like to join, support or even set up and run, a local sports club?



Please come along to the drop in sessions on Saturday 6 and Sunday 7 December to share your ideas with the Working Group.

Did You Know?

King George's Playing Field was acquired for the village in 1938 when the King George V Jubilee Trust Fund secured the land for the village. The land had to be thoroughly ploughed and levelled to remove ridges and furrows from its previous use. However, the land could have been made available to the village some 40 years earlier – Parish Council minutes show that in 1894, an offer was made by Lord Warwick to donate the field which was rejected following letters of objection from influential villagers.

Source: *Becoming Barford*

This newsletter has been produced by the King George's Playing Field JPC Working Group. For more information, or to provide support, please contact the Working Group via John Murphy (jpc@jvmurphy.co.uk) or Mark Griffin (mark.griffin1@outlook.com).