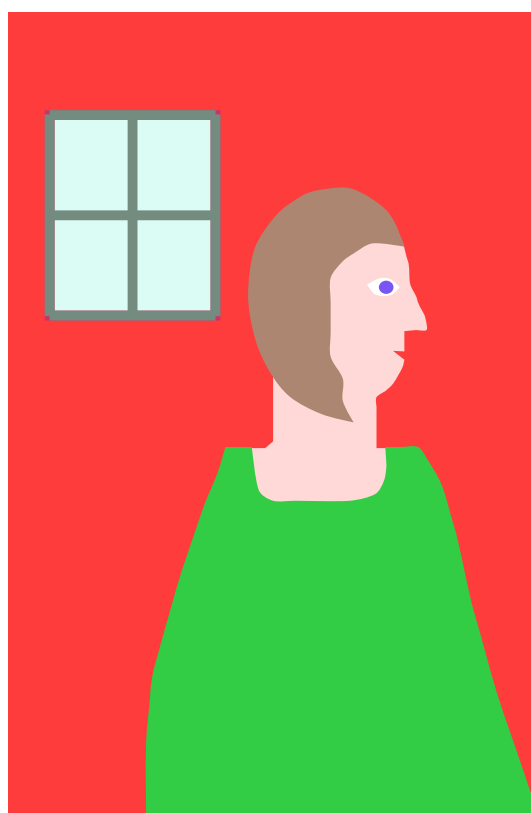


This page was produced on Saturday 11 May 2019 while learning how to produce text wrapped around an illustration in the Affinity Publisher program (beta version 305). The font is Sonnet to a Renaissance Lady. As this page is being typed there is anticipation of observing the wrapping effect in action. The choice has been made to leave a five millimetre gap around the image at each

edge of the image. Ah, this is where the wrapping effect takes place and it works beautifully so as to give the exact effect that was being sought. This software is very good and very impressive. As this is being typed there is anticipation as to exactly how the size of the image will line up with the text that is being produced.



The scaled size of the image was chosen before the text was entered and in this case this has resulted in a gap below the image. Yet as this is a learning example the scaled size of the image is not being altered so as to make the text fit closer to the image. An interesting learning experience for the author of this document, who also typeset it.