

All four of these doodles use Victorian 'sets'. The sets are very easily made by making the given number of first half of the ds followed by the given number of second half of the ds. The interesting part of these patterns is that in doodle f, the bead will appear to be in the centre of the ring with a small 'heart' shaped dip in the ring providing an interesting design element. In doodles g & h the sets are used in the chain. The chain in f has it's head towards the centre of the motif but the bead then appears on the outside!! In g this is reversed making a heart shaped chain. Using 'sets' is a way of making a 'mock' dimpled ring.

Doodle (e) – 2 shuttles

8 beads on Wsh1

Hint:- when adding beads to second picot of first ring leave almost as much thread after the beads as the beads use up

Using Wsh1

R1: 6 picot with 3 beads added 6

Ch: 8 – 8

R2: 6 + (2nd p on R1 between next 2 beads) 6

Ch: vsp 8 – 8

R3: As R2 Change shuttles and turn work before starting

Ch: 12 + B(p on 2nd Ch) 12

R4: 6 + (vsp base of R2) 6

Ch: Move last 5 beads along before starting 12 + B(p on 1st

Ch) 12 Join to base of R1 T & C

**Doodle (f) – 1 shuttle - Earrings**

Seta = 4 first half of ds setb = 4 second half of ds

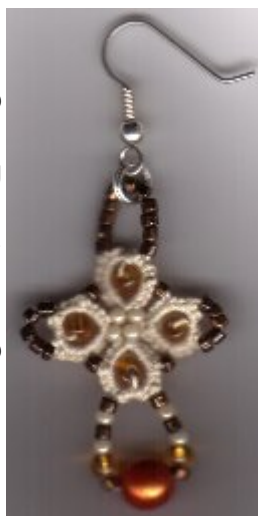
1 shuttle – beads (8 on shuttle thread – rest to add to picots), small galley ring, ear wires.

Tip – see [this link](#) for adding many beads to long picots.

R1: 4 – 4 Lp(¼") 1 seta B setb 1 +BBBBB(Lp) 4 – 4 move B to base of R1 before starting R2

R2: 4 +B(last p R1) 4 Lp(¾") 1 seta B setb 1 +BBBBBBBBB & small galley ring (Lp) 4 – 4 move B to base of R2 before starting R3

R3: 4 +B(last p R2) 4 LP(¼") 1 seta B setb 1 +BBBBB(Lp) 4 – 4 move B to base of R3 before starting R4

R4: 4 +B(last p R3) 4 LP(1 ½") 1 seta B setb 1 +BBBBBBBBBBB very large B BBBBBBBBBBBB(Lp) 4 +B(1st p R1) 4 move B to base of R4 T & C**Doodle (g) - Small star**

seta = 4 first half of double setb = 4 second half double

1 shuttles 5 beads on chain thread + 10 beads to add to picots

Centre Ring

1 – 2 – 2 – 2 – 2 – 1 T & C

Outer row

Ch: +B to p on centre ring *4 – 4 seta B setb 4 +B

last p on chain 4 +B next p on centre ring. Repeat from * 4 times joining to last p of centre ring. T & C



Doodle (h) – Inverted Chain Motif

seta = 4 first half of double setb = 4 second half double

Hint:- when adding beads to second picot of first ring leave almost as much thread after the beads as the beads use up.

1 shuttle + chain thread – beads (5 on shuttle thread, 5 on chain). More beads to add to p's.

R1: 4 – 2 picot with 5 beads added 2 – 4

*Ch: 6 seta B setb 6

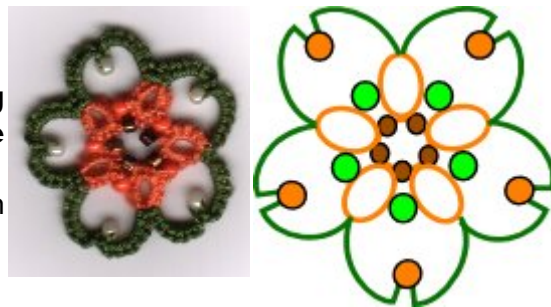
R2: 4 +B(last p previous R) 2 +(2nd p R1 btwn next 2 p's) 2 – 4

Repeat from * twice

Ch: 6 seta B setb 6

R5: 4 +B(last p previous R) 2 +(2nd p R1 between next 2 p's) 2 +B(1st p R1) 4

Ch: 6 seta B setb 6 T & C



Should you need further help with this pattern please [contact me.](#)